



www.MAPSplanetarium.org

**Middle Atlantic
Planetarium Society
Conference
July 17-20, 2013**

Spaceship Earth: Educating Its Crew

Hosted by the Earth and Space Science
Laboratory
at Frederick, Maryland



<https://sites.fcps.org/essl>

Dear MAPS Member;

The Earth and Space Science Laboratory invite you, MAPS friends and colleagues, to join us July 17-20 in Frederick Maryland for what will be a historic conference. The meeting will be a great time of camaraderie and professional development, plus the chance to shop, dine, and discover historic cities and towns, wineries, orchards, and Civil War heritage sites in Frederick County. MAPS selected its name here in 1965 with a much smaller membership and simpler technology.

Lifest! - Preceding MAPS, Tuesday July 16, our facility will host a special small dome workshop sponsored by Powerful Interactive Planetarium Systems (PIPS) and MAPS. Lifest! will focus on lessons and guidance for portable and small dome educational presenters. See enclosed info page for more details.

Generous support from our sponsors has again allowed a low registration cost. The full registration is \$130 before June 8. Take advantage of their support and expertise by joining us in the rich cultural region of Frederick County.

This year, this same packet of forms is available for internet download in case you need another copy, PLUS conference registration can be completed and paid through PAYPAL. For more information visit the MAPS web site.

Please make your plans early. Frederick is a great city and county if you would like to bring your family!

Come early and stay late!

Jeffrey Grills *Mark Bowman*

Jeffrey Grills and Mark Bowman, Your ESSL Hosts

Our facility: The Earth and Space Science Laboratory (ESSL) includes a Digistar 3/ Goto-Chronos Hybrid Planetarium Projector; 35 foot horizontal dome with seating for 90. Two classrooms, an elaborate salt water aquarium system, and a variety of life, physical, and earth science displays complete the facility.

A two acre arboretum and a 15' observatory are a part of the campus and will be available for the conference. The vendor hall will be housed in the gymnasium at the adjacent school. The cafeteria will be available for certain presentations.

Vacation time too- Summer time is a perfect time to take in historic Frederick County. The tourist board even has apps for a visitor guide, walking tour, and Maryland Civil War trails for your i-stuff and androids. Check out the site www.frederick.org for those- and more- to plan your visit. Plus, Frederick is about an hour from either Washington D.C. or Baltimore.

Our conference hotel: Just 2.5mi. from the ESSL, has extended a low group rate for our members as long as they reserve by June 1. Contact them - Holiday Inn Frederick-Conf Ctr. at Francis Scott Key Mall, 5400 Holiday Drive, Frederick, MD 21703 Phone: (301) 694-7500 Fax: (301) 694-0589. NOTE: *Not the Holiday Inn Express.*

Travel directions to hotel: Driving: From I-270 Exit 31A to Rt 85 N. Turn right at first light (Spectrum Drive). Bear right immediately onto Holiday Drive. Hotel is on the right. From I-70 Exit 53A to I-270 S. Take exit 31A to Rt 85 N. Turn right at first light (Spectrum Drive). Bear right immediately onto Holiday Drive. Hotel is on the right.

By air- Shuttles are available for \$85 from three airports: Dulles (IAD), Baltimore/Washington (BWI) and Ronald Reagan Washington National (DCA).

Schedule Highlights: Up-dated schedules will be posted on the MAPS web site; www.MAPSplanetarium.org.

Wednesday

Pre-Conference Field Trip

Evening

Welcome Reception - refreshments

Vendor demos

Shoot your mouth off

Observatory Time- Weather permitting

Thursday

Welcome

Vendor Hall open ALL DAY

Scavenger Hunt

Lunch with speaker

Break w/vendors

Vendor Demos

Vendor Talks

Break w/vendors

BUSINESS MEETING

Plenary Talks

Dinner with speaker

Constellation Contest

Observatory Viewing

Friday

Vendor Hall open ALL DAY

Committee meetings

Panel discussions

Break w/vendors

Lunch with Speaker

Vendor demo or talk

WORKSHOP SESSIONS

Banquet and Noble address

Saturday Morning

Plenary talks (final)

Door prizes & Conclusion

Participate and Contribute:

There are three major ways to bring your talent and unique experience to the stage in a MAPS conference. *Plenary talks* are short 10-12 minute talks with or without hand-outs to the general group and a short question period. Some subjects for a number of reasons are better presented with display boards, hand-outs and one-to-one conversation and a *Poster paper* display allows that with a dedicated period of viewing. *Workshops* are longer 45-90 minute engaging sessions when small groups explore specific subjects together with a leader. Proposal forms for these are enclosed and the Program Committee welcomes one or more with your registration. And you can send them ahead of your registration form to help our hosts with scheduling.

Style and Etiquette:

Conference attire is generally work day casual but July 2013 will be a summer casual event. Many choose formal / coat-and-tie dress for the banquet Friday night. Weather typically will be hot and humid but all facilities are climate controlled.

In light of the tech culture of the 21st Century: As a professional courtesy to all speakers, please turn off cell phones, tablets, and pagers during presentations. Texting, surfing or talking during talks are distracting to all participants.



Contacts and Important Deadlines:

ESSL Mailing and Shipping Address:

Earth and Space Science Lab
c/o Bowman/Grills
210 Madison St.
Frederick, MD 21701
Phone: 240-236-2694
Host email: Jeffrey.Grills@fcps.org

Holiday Inn Frederick-Conf Ctr At Fsk Mall

5400 Holiday Drive
Frederick, MD 21703
Phone: (301) 694-7500 Fax: (301) 694-0589

Important Deadlines:

Reserve hotel rooms: June 1

Mail registration: June 8

MAPS Treasurer:

Keith Johnson
Science Hall, Rowan University
201 Mullica Hill Road
Glassboro NJ 08028
email: Johnsonk@rowan.edu

MAPS Program Committee Chair

Alan Davenport
Email: Davenport@galaxymaine.com

MAPS web: www.MAPSplanetarium.org



A great series of workshops, program offerings and guest speakers are being planned.



Possible Workshops:

- Blender for Beginners
- Cosmology Panel
- Earth, Sun, Moon Models in the classroom.
- Earth/Sun/Alpha Centauri/Light Speed/Size of the Universe
- Teaching the Moon to Elementary Students
- NGSS/Common Core Update
- Quarks to Clusters
- Scavenger Hunts
- Constellation Contest
- Shoot Your Mouth Off – Think about what you would like to contribute!

Speakers:

Thursday Lunch:

Dr. Chris Horne – Finding Space under the Stars

Thursday Dinner:

Stephanie Bednarek – The Next Step in Space

Friday Lunch:

Dr. Kevin Williams- Mapping Geologic History in Margaritafer Terra, Mars

Friday Banquet:

Don Knapp – Lost in Space

Use the enclosed forms to contribute as part of the program with talks, posters or workshops.

Robinson Nature Center – Columbia Maryland



<http://www.co.ho.md.us/RobinsonNatureCenter.htm>

Transitional Conference Event Wednesday, July 17, 10:00 – 1:30

Following Tuesday 's Lifest, a field trip to the Robinson Nature Center in Columbia, Maryland, is planned for Wednesday. **Lifest and MAPS members are welcome to attend.** This event will be held before the welcoming reception at the Earth and Space Science Lab that will begin the official MAPS Conference.

All Lifest attendees are encouraged to stay for the MAPS conference and all MAPS attendees are encouraged to come early!

We will tour the grounds and the facility. Part of the adventure will be held in the Naturesphere – a 24' dome equipped with a Spitz SciDome.

Joel Goodman, planetarium director, will be our host . Spitz, Inc. will provide lunch and a demonstration of new astronomy lessons and curriculum.

Hotel Information

Important Note:

Please reserve your room as early as possible. This is a busy time in Frederick this summer with the 150th anniversary of the Civil War. We have a limited number of rooms.

Holiday Inn and Conference Center at FSK Mall
5400 Holiday Drive
Frederick, MD 21703

Phone – 301-694-7500

When reservations are made mention you are with the **MAPS Conference. Rooms include a full buffet breakfast.**

1 person per room w/breakfast	- \$112
2 people per room w/breakfast	- \$120
3 people per room with breakfast	- \$128
4 people per room with breakfast	- \$136

Plus 9% tax.

From the Frederick Visitor Center – a delegate will be at the Vendor Hall on Thursday and Friday for a limited time.

Local Information for participants, spouses, and families:

Frederick is in close proximity to a variety of metropolitan and outdoor activities.

- National and State Parks
- Civil War battlefields
- Local Museums
- Wineries
- Washington, D.C.
- Baltimore
- Great Restaurants
- Bed and Breakfasts

Frederick Visitor Center
<http://visitfrederick.org/>

Frederick County Parks and Recreation
<http://www.frederickcountymd.gov/index.aspx?nid=3034>

Local Restaurants
<http://local.search.yahoo.com/search?p=restaurants&addr=Frederick%2C+MD&vm=r>

Frederick Wineries
<http://frederickwinetrail.com/>

The Earth and Space Science Lab is located 2.5 miles from the Holiday Inn. About a 7-8 minute drive.



DESTINATION Frederick

The City. The County. The Region.

Frederick County, Maryland

is less than one hour from Washington, D.C., Baltimore & minutes from Gettysburg, Antietam & Harpers Ferry. Let us be your guide as you shop, dine & discover historic cities & towns. Scenic byways lead to wineries, orchards & Civil War heritage that our county has to offer.



Frederick Visitor Center

151 S. East St., Frederick, MD 21701
301-600-4047

The new Frederick Visitor Center, located in a century-old former industrial warehouse, opened in April 2011. Here visitors can take in state-of-the-art visitor exhibits that are designed to showcase all there is to see and do in Frederick County. Guests can also see the "big picture" of all the area has to offer when they view the award-winning multi-screen orientation film, *A Turn of the Wheel*.



Historic Downtown Frederick: Steeped in History

Strolling through the streets of Frederick, it's easy to forget that the city was the largest "northern" city General Robert E. Lee ever occupied during the Civil War. But looking past the specialty shops, restaurants and cafes, Frederick is a place of rich history and a destination for visitors seeking the stories of our nation's past. It was announced as one of the 2002 Dozen Distinctive Destinations and earned the prestigious Great American Main Street award in 2005 by the National Trust for Historic Preservation. In 2007, Frederick was named a Preserve America Community.

Here, visitors can explore:

- Rich Civil War History
- Barbara Fritchie's Frederick
- Francis Scott Key's final resting place
- Shopping & Culinary Adventures
- Outdoor Adventure
- Historic Spaces & Garden Oases
- Covered Bridges
- Guided Tours
- Frederick Wine Trail & Local Micro-Breweries
- Arts & Entertainment

*"The clustered
spires of
Frederick stand,
green walled
by the hills of
Maryland."*

-John Greenleaf Whittier



Distances from the City of Frederick, MD



Civil War History

2013: Gettysburg's 150th Anniversary

- **New Maryland Civil War Trails App**
This newly released mobile application is designed to create an engaging Maryland Civil War Trails experience on mobile devices. In Frederick, the Civil War Trails of the Antietam and Gettysburg Campaigns link major battlefields and historic sites with human interest stories.
- **New Tour: Miracles Amid the Fire Storm**
Minutes from Gettysburg at the National Shrine of St. Elizabeth Ann Seton, learn how the Sisters and Daughters of Charity served soldiers during the war. Hear stories of rescues, healing, and miracles on the battlefield. Fri & Sat, 11am, 1pm, 3pm. Free

2014: 150th Anniversary of "The Battle that Saved Washington" at Monocacy National Battlefield

The Battle of Monocacy in Frederick, MD cost Confederates time and allowed Union forces to reinforce Washington, saving the capitol. Commemorations planned July 2014.

National Museum of Civil War Medicine

7,000 square feet of life-like exhibits tell the story of care and healing, courage and devotion amidst the death and destruction of war.

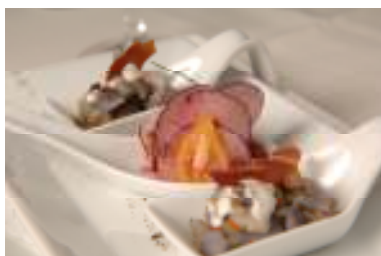
The Arts: Frederick named a Top 25 Small Art City

AmericanStyle Magazine has once again named Frederick as a Top 25 Small Art Cities in the United States. Attractions include:

- **Performing Arts:** Weinberg Center for the Arts, Maryland Ensemble Theater
- **Galleries:** Delaplaine Arts & Education Center, Cultural Arts Center, independent galleries
- **Events & Attractions:** Juried arts and crafts festivals, a plein air festival, concerts, film festivals, galleries, and internationally-recognized public art.



Shopping, Dining & Culinary Adventures

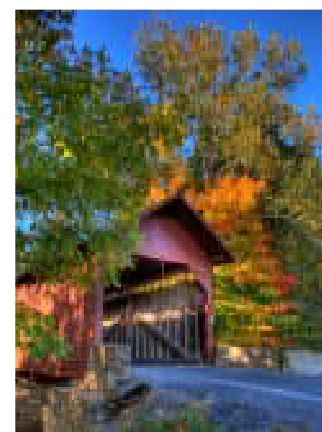


- **50-block Historic District**
Downtown Frederick is a hub of fine dining, shopping, and antiquing.
- **Dine, Tour & Taste**
Experience the Frederick Wine Trail or one of Frederick's many breweries.
- **Orchards, Farms & Markets**
Farm markets and orchards offer fresh produce, pick-your-own, baked goods, farm festivals, and more.

Scenic Byways & Outdoor Recreation

Frederick County is crisscrossed by 6 designated scenic byways, including the Historic National Road and Maryland's portion of the Journey Through Hallowed Ground. Also enjoy:

- **11 National and State Parks**, including Catoctin Mountain National Park, Cunningham Falls State Park, the Appalachian Trail, C&O Canal, and more
- **Outdoor Recreation:** Hiking, biking, kayaking, canoeing, rafting, golf, and fishing
- **Covered Bridges of Frederick County** – Frederick County has 3 of only 8 remaining covered bridges in Maryland.

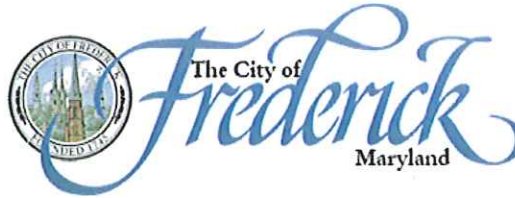


Mobile Website

What to See • Where to Shop, Dine & Stay • Events & Special Offers • Resources
It's all there for you to easily access from your phone—anytime, anywhere.
<http://m.fredericktourism.org>



Randy McClement
Mayor



Aldermen

Karen Lewis Young
President Pro Tem
Michael C. O'Connor
Shelley M. Aloï
Carol L. Krimm
Kelly Russell

Welcome to The City of Frederick!

On behalf of the Board of Aldermen and the citizens of this City, I welcome the Mid-Atlantic Planetarium Society members to The City of Frederick. Founded in 1745, Frederick is "where the past meets the present." The City of Frederick boasts a proud history including the Revolutionary and Civil Wars. Take a walking tour of our historic downtown area and you will see where Barbara Fritchie shook the flag at Stonewall Jackson and the final resting place of the author of our National Anthem, Francis Scott Key. The beautifully maintained historical architecture blends with our exciting Carroll Creek Project. Our downtown offers a diverse selection of restaurants and eateries as well as many wonderful specialty shops, art galleries and antique shops. From our treasured Weinberg Center for the Arts to our beautiful Baker Park, home of the largest musical instrument in Maryland, the Carillon, to Harry Grove Stadium, home of the Frederick Keys, our City is full of many "jewels."

As Mayor of the City of Frederick, I invite you to take some time to visit and enjoy the wonderful quality of life we enjoy in Frederick. We hope to see you often!

Sincerely,

A handwritten signature in blue ink, appearing to read "Randy McClement".

Randy McClement
Mayor
The City of Frederick